

OSKA®

# Series5

Lateral tilt mattress



Ultimate comfort and lateral tilt therapy.



Automatic  
tilt



Reduce  
nurse intervention



Improved  
comfort & sleep



Complex  
care needs



Falls  
protection

The Series5 specialist lateral tilt mattress offers very high clinical benefits, especially for palliative, end of life care and complex needs. Providing effective and proven pressure redistribution (OSKA UK, 2018), tissue immersion and envelopment, combined with shear reduction and microclimate management make this a brilliant mattress for acute, hospice and community care.

Caring for patients at life's end or those with complex conditions presents many challenges, not least maintenance of skin integrity. The Series5 is ideal for palliative and end of life care, other complex neurological conditions, or situations where manual turning is difficult, such as acute pain and limb contractures.

Delivering built-in, gentle lateral tilting therapy all-in-one system, the Series5 is very effective even for the most complex Category 4 pressure ulcers.

## Lateral tilt:

The innovative Series5 provides automatic repositioning, meaning the mattress can be switched from alternating therapy to lateral rotation therapy, which gently tilts the patient from side to side every 10 minutes, 5 minutes on either side to alternate the pressure.

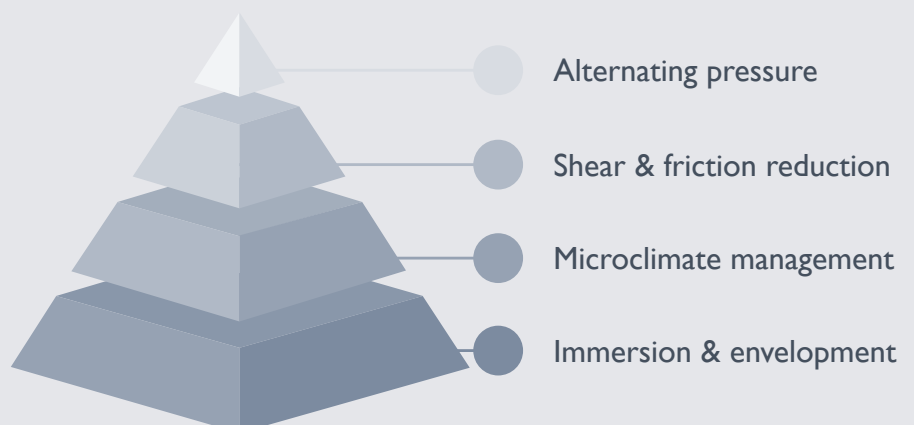
Not only does it provide this optimal tilt of up to 20° both sides every 10 minutes, as suggested by Oomens et al, (2016), it also achieves a suitable microclimate for tissue health and micro-shift to replicate natural body movement.

- reduces nursing time of turning each individual patient
- increases patient comfort due to the excellent immersion and envelopment properties
- releases carers to provide more social support to patients.



## Advanced Pressure Care

### Cumulative Function Hierarchy



# Series5

OSKA®



## Microclimate management

The combination of unique foam construction and vapour permeable cover assist with microclimate management of patients' skin.

## Safety edge system

Specially designed safety edge system, helps direct patients back towards the mattress centre reducing the risk of falls.

## Shear management

Three anti-shear zones reduce the potential for shear-related tissue injury in vulnerable areas.

## Heel relief slope

Protect vulnerable heels, one of the most vulnerable parts of the body.

## Lateral tilting air cells

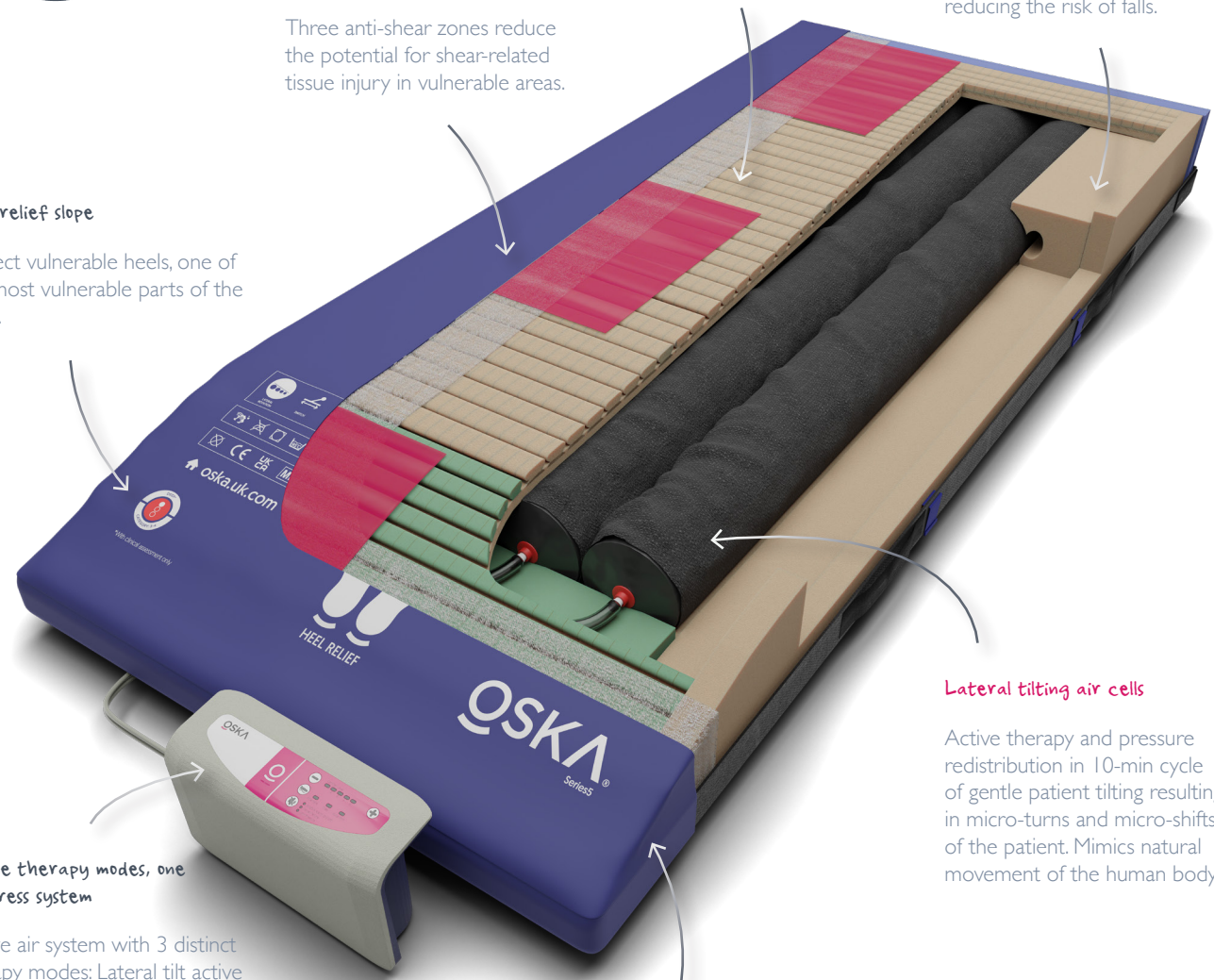
Active therapy and pressure redistribution in 10-min cycle of gentle patient tilting resulting in micro-turns and micro-shifts of the patient. Mimics natural movement of the human body.

## Three therapy modes, one mattress system

Active air system with 3 distinct therapy modes: Lateral tilt active therapy, alternating active therapy and static reactive therapy.

## Tough-Weld seams & V-Guard Cover

Extra strong covers to help protect against strike-through and damage from cleaning chemicals.



**“The Series5 mattress offers clinicians an innovative support surface, suitable for pressure ulcer prevention & management even in the most dependent CCU patients.”**

Lead Tissue Viability Nurse, NHS Acute Hospital



# Series5 Evaluation



## Case evaluation leaders:

Sylvie Hampton and Sarah Gray

## Methods

- The mattress was placed in a nursing home.
- It was trialled on two patients.
- The nurses completed a questionnaire at each assessment on a daily basis over 4 weeks.
- The residents were asked for an opinion.
- The nurses and carers were asked for an opinion.
- Patient (a) had a heel pressure ulcer of 5 weeks duration.
- Patient (b) had a sacral pressure ulcer which had been in situ for 'at least' 2 years.

## Outcomes

The wounds in figures 1 and 2, 3 and 4 show the results of the LateralTilt mattress over a 4 week period.

The residents were assessed for needs every 4 to 6 hours while they were on the OSKA Series5. Post evaluation of this mattress, the staff had to reposition every 2 hours.

Resident 1 had redness on heels and sacrum and there was established pressure injury in both residents at commencement of the evaluation.

The staff found it extremely simple to set up the mattress, even without instructions.

No difficulties were noted with the mattress. There was a very slight noise from the compressor that did not interfere with the sleep of the residents. Both stated that the mattress was comfortable and they appreciated not being repositioned every 2 hours.

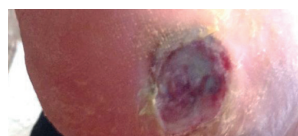


Figure 1

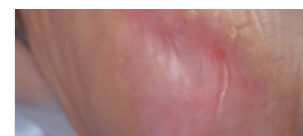


Figure 2

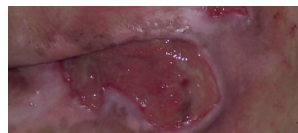


Figure 3

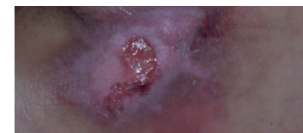


Figure 4

## Conclusion

The OSKA Series5 proved extremely useful in these two cases. It removed the fear of missing the 2 hourly repositioning times and reduced the trauma of repositioning for the resident.

This mattress should certainly be considered for those patients/residents at end of life when comfort is so very important. It would also reduce the ritualistic practice of 2 hourly turns and free the carers to provide better focussed care to the residents.

**"We have had a great result using the lateral tilt mattress with a patient who has a spinal chord compression & lymphoedema who cannot lie on his side so is constantly on his bum sitting upright in bed or in his wheelchair.**

**I made it a priority to get him on to one of the OSKA Series5 lateral tilt mattresses asap & within 7 days we are seeing a huge improvement to his 3 broken areas which are being dressed daily & the surrounding skin is a much better colour!"**

**Senior Charge Nurse, Alexandra Palliative Care Unit,  
Dumfries & Galloway Royal Infirmary**

## Specification

Prevention Very High Risk

Treatment Category 4\*

Size 87 / 100 x 200 x 18cm

Max. user weight 159kg / 24st

\*With clinical assessment. Support surface selection requires holistic patient assessment and cannot be decided on risk assessment score alone (EPUAP 2015).

## Order Code

87 x 200 x 18cm

PR13-606

100 x 200 x 18cm

PR13-607



Edward House, 5 Penner Road, Havant, PO9 1QZ

02394 318 318 • ask@oska.uk.com • oska.uk.com